

Rev	Number	Date	Revision
A1	01	2014.07.24	Initial
B1	02	2014.07.24	Revise

JTAG Comment J4 UART

RESET

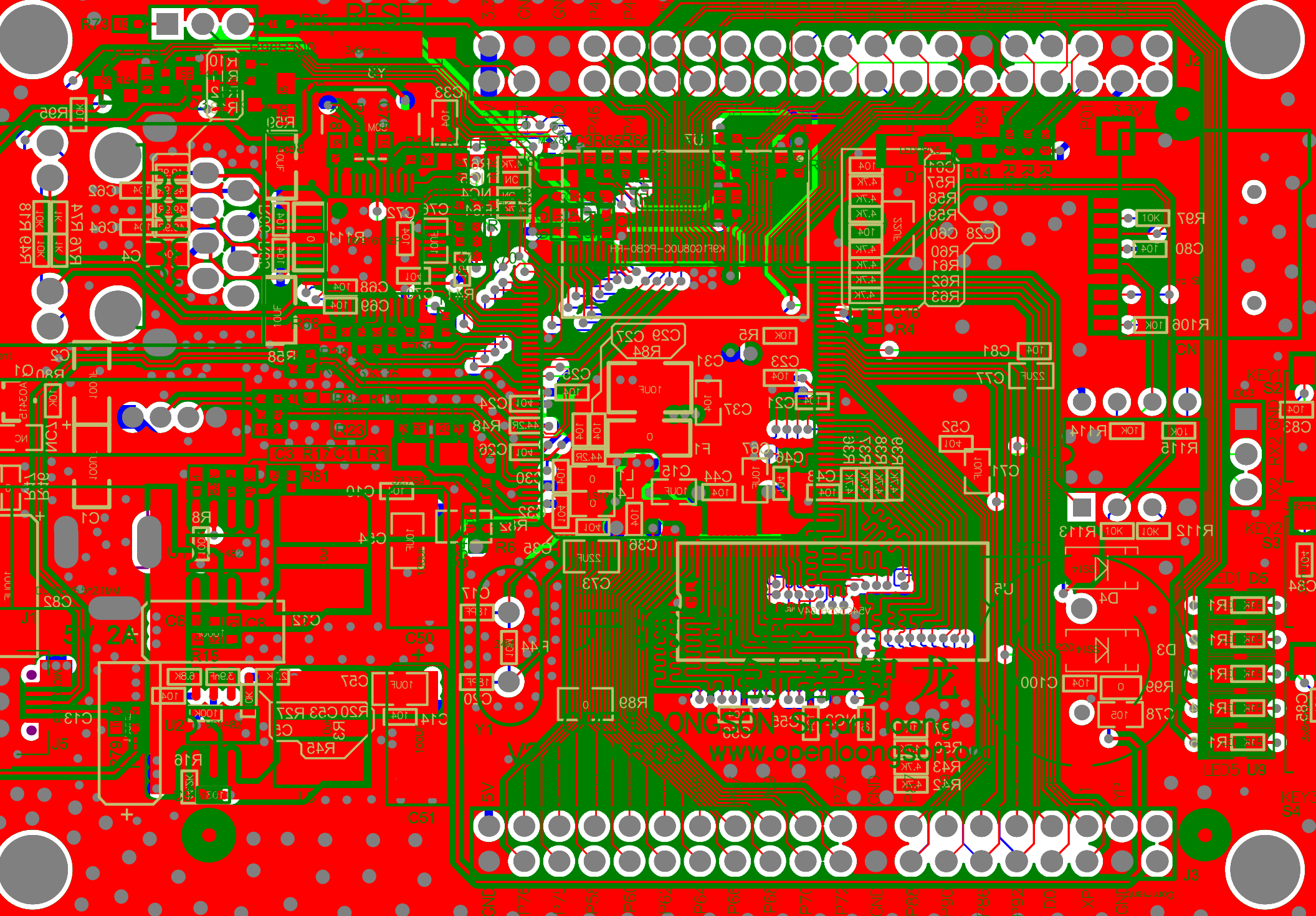
3.3V GND GND P47 P49

3.3V

GND P76 P75 P58 P60 P62 P64 P66 P68 P70 P72 P73 GND P88 P90 P86 P92 D0 XP GND

Comment J3

www.openlongsoft.com



Comment	Description	Designator	Footprint	LibRef	Quantity
Battery	Multicell Battery	BAT1	BAT-2	Battery	1
Cap Pol1	Polarized Capacitor (Radial)	C1, C2, C12, C13, C50, C51, C82	RB7.6-15	Cap Pol1	7
Cap	Capacitor	C3, C4, C5, C6, C7, C8, C9, C10, C11, C14, C15, C16, C17, C18, C19, C20, C21, C23, C24, C25, C26, C27, C28, C29, C30, C31, C32, C33, C34, C35, C36, C37, C39, C40, C41, C42, C43, C44, C46, C48, C52, C53, C54, C55, C56, C57, C58, C59, C60, C61, C62, C64, C65, C66, C67, C68, C69, C70, C71, C72, C73, C75, C76, C77, C78, C80, C81, C83, C84, C85, C100, R51	RAD-0.3	Cap	72
micro SD	Header, 10-Pin	CN1	HDR1X10	Header 10	1
LED2	Typical RED, GREEN, YELLOW, AMBER GaAs LED	D1, D2, D5, D6, D7, D8, D9	3.2X1.6X1.1	LED2	7
SS14	3 Amp General Purpose Rectifier	D3, D4	DO-201AD	Diode 1N5406	2
Res2	Resistor	F1, L1, L4, NC, NC1, NC2, NC3, NC4, NC5, NC6, NC7, R1, R3, R4, R5, R6, R7, R8, R9, R10, R11, R12, R13, R14, R15, R16, R17, R18, R19, R20, R21, R22, R23, R24, R25, R26, R27, R28, R29, R30, R31, R32, R33, R34, R35, R36, R37, R38, R39, R40, R41, R42, R43, R44, R45, R46, R47, R48, R49, R50, R52, R54, R56, R57, R58, R59, R60, R61, R62, R63, R64, R65, R66, R67, R68, R69, R70, R71, R72, R73, R74, R75, R76, R77, R78, R79, R80, R81, R82, R83, R84, R86, R87, R89, R91, R93, R94, R95, R96, R97, R98, R99, R100, R101, R102, R103, R104, R105, R106, R110, R111, R112, R113, R114, R115	AXIAL-0.4	Res2	115
DC005/5.5*2.1MM	Low Voltage Power Supply Connector	J1	KLD-0202	PWR2.5	1
Header 20X2	Header, 20-Pin, Dual row	J2, J3	HDR2X20	Header 20X2	2
JTAG	Header, 3-Pin	J4	HDR1X3	Header 3	1
MICRO USB	Header, 6-Pin	J5	HDR1X6	Header 6	1
USB	Header, 4-Pin	J6	HDR1X4	Header 4	1
UART	Header, 3-Pin	J7	HDR1X3	Header 3	1
HR911105A	Header, 16-Pin	JP1	HDR1X16	Header 16	1
Inductor	Inductor	L2, L3	0402-A	Inductor	2
AO3415	P-Channel MOSFET	Q1	E3	MOSFET-P	1
S9014	NPN Bipolar Transistor	Q2, Q3	TO-226	NPN	2
SW-PB	Switch	S1, S2, S3, S4	SPST-2	SW-PB	4
MP1482DS		U1, U2		MP1482DS	2
DM9161CEP		U3		DM9161CEP	1
LS1C0300A		U4		LS1C0300A	1
V54C3256164VH6I		U5		V54C3256164VH6I	1
K91G08U0E		U7		K91G08U0E	1
MAX811		U8		MAX811	1
W25X40BV		U10		W25X40BV	1
24M	Crystal Oscillator	Y1	R38	XTAL	1
32.768K	Crystal Oscillator	Y2	R38	XTAL	1
50M		Y3		50M	1